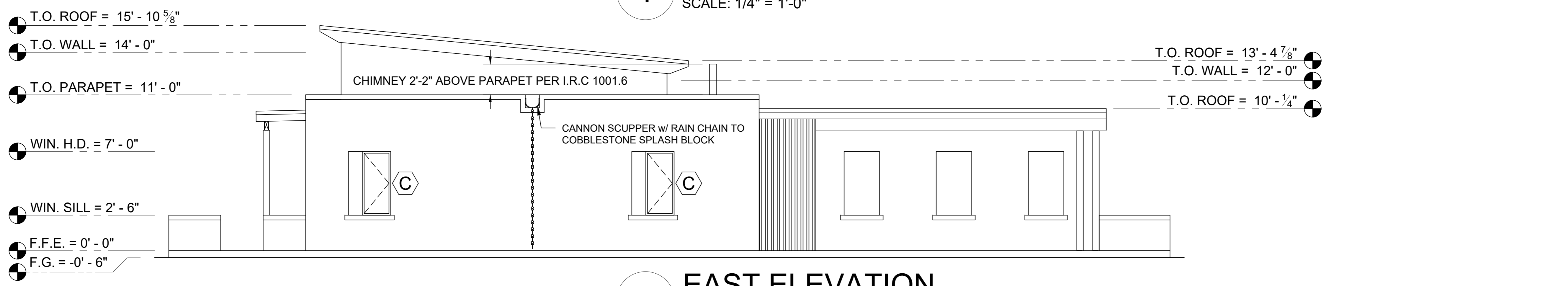
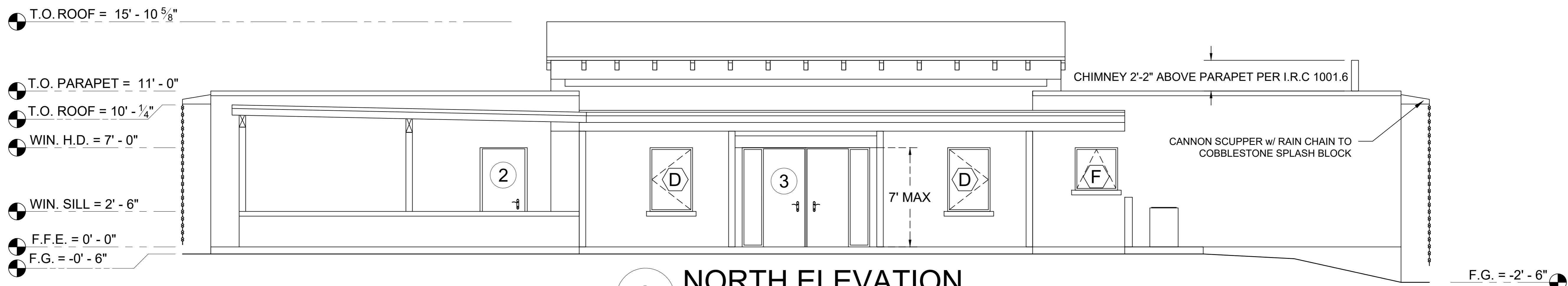


**1 SOUTH ELEVATION**  
SCALE: 1/4" = 1'-0"

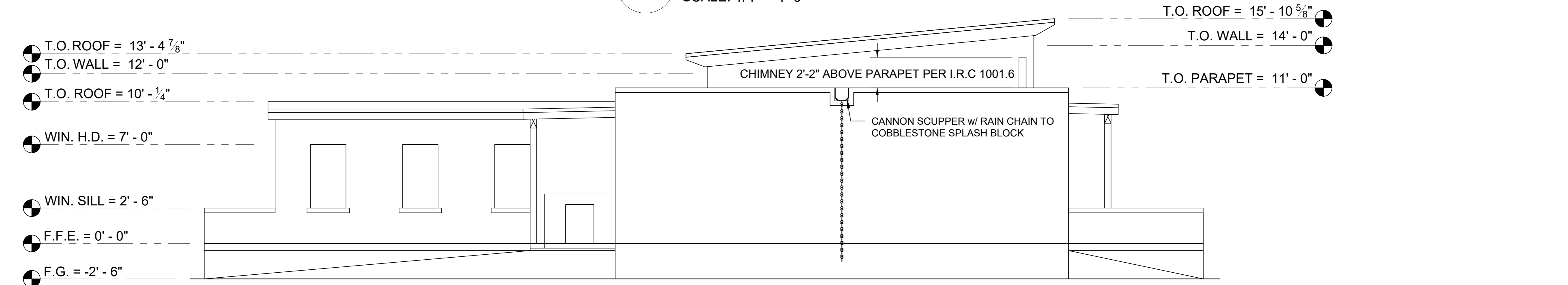
FINISHED GRADE SHALL SLOPE AWAY FROM FOUNDATION A MINIMUM OF 6" WITHIN THE FIRST 10 FEET PER THE INTL RESIDENTIAL CODE \*\*R401.3



**2 EAST ELEVATION**  
SCALE: 1/4" = 1'-0"



**3 NORTH ELEVATION**  
SCALE: 1/4" = 1'-0"



**4 WEST ELEVATION**  
SCALE: 1/4" = 1'-0"